

PRAIRIE WOODS

Warbler



Central Minnesota
Community Foundation
Engaging People. Building Community.



A publication of Prairie Woods Environmental Learning Center in cooperation with Prairie Country Resource Conservation & Development (RC&D) Council

VOLUME 14

SUMMER 2008

ISSUE 2

Trustees and Governing Board Members

Ron Erpelding, President
Cindy Westby, Vice-President
Mary Merlin-Pelkey, Secretary
Joel Schmidt, Treasurer
Jeff Danielson
Allison & Luke Geiger
Dr. Robert Kaiser
Bradley Pederson
Jim Tetzloff
Ben Thoma

Governing Board only

Richard Larson
Harlan Madsen

Trustee Board Members

Betty Croonquist
Richard Falk
Steve Hage
Bob Haines
Bob & Pauline Halvorson
Bill Johnson
John & Mary Lindstrom
Dr. Steve Martinka
Dr. Jim & Colleen Michels
Brad Michelson
Doug Mossberg
Dennis & Ruthanne Neeser
Karen Schneider
Denise Smith
Dr. Roger & Kay Strand
Dr. Jim & Marilyn Tiede
Paul & Sandra Vollan

Staff

Dave Pederson,
Executive Director
Deb Anderson,
Challenge Course
Coordinator
Ryan Block, Sporting
Programs Facilitator
Anne Dybsetter,
Environmental Education
Coordinator
Ann Phillips,
Office Manager
Teri Wermerskirchen,
Time Travel
Jeffrey Vetsch, Building &
Grounds Steward

You Are Invited to PWELC for

An Evening Under the Prairie Stars

an earth conscious benefit for the environmental education of our youth

Join us for...

- dining under the stars
- locally grown food
- cocktails in the barn
- live jazz & bluegrass
- GREEN live & silent auction

ENVIRONMENTALLY FRIENDLY EVENT

Friday September 12th 5:30pm

Prairie Woods Environmental Learning Center Spicer, Minnesota

Event Underwriters

K100-100.1FM*106.5 The Train*Q102.5FM*KWLM 1340AM
Heritage Bank of Willmar and Pioneer Heritage Insurance
PWELC Board of Trustees

Tickets \$50 / For tickets, more info, or to make a donation call 320-354-5894



Notes from the Executive Director

by Dave Pederson, Executive Director

A quick read through any newspaper reinforces that Prairie Woods has important work to do to help people "learn to live well with self, others and the environment." It's easy to be consumed with details of the day and lose sight of the big picture. It is also easy to be consumed by the big picture and lose track of the details. At a recent conference, the keynote speaker Peter Hutchinson, CEO of the Bush Foundation, exhorted the audience to "think no small thoughts, but take no big steps." Every day, keep taking small steps with a bigger goal in mind.



At Prairie Woods, it sometimes seems like we take our "small steps" at a sprinter's pace in order to keep up with the "big thoughts." Once again, this newsletter is filled with reports on the

many steps that are being taken by our staff, volunteers, contributors and partners to make a real contribution to the environmental, social and economic health of our region.

You'll enjoy reading about projects completed and projects in the works; progress toward our goal of 100% renewable energy by 2010; Year 2 of YES! (Youth Energy Summit) and our exciting partnership with Southwest Initiative Foundation; the JJM Victory Run; the new "History of Corn" Exhibit; website upgrades; new trustees; several acts of kindness; reports from the challenge course, sporting programs, and time travel programs; and an opportunity for you to participate in *An Evening Under the Prairie Stars* to help support it all.

Thanks for taking the time to stay updated on the vital work that is going on at Prairie Woods to promote environmental stewardship in our region. Thanks also for taking your own small steps each day to insure that future generations will enjoy clean air, clear water, healthy soil, abundant habitat.

Dave

WELCOME NEW TRUSTEES!

Prairie Woods recently welcomed the following to serve on the full Board of Trustees: John and Mary Lindstrom, Bob and Pauline Halvorson, Bradley Pederson and Bob Haines. Bradley Pederson also serves on the governing board, and Bob Haines is serving as a member of the Executive/Finance Committee. Please join in thanking them for contributing time and talents to the work of PWELC.

Volunteer Opportunities

Share special talents and interests at PWELC!

- ◆ Volunteer to work with a Youth Energy Summit team on an Energy Action Project in your community.
- ◆ Help to design and build the first student cabins
- ◆ Help to design & construct displays for the exhibit hall.
- ◆ Recruit new members
- ◆ Become a member of the Site Committee, Program Advisory Board, or Promotions Committee
- ◆ Participate as an 1888 re-enactor in Time Travel programs. Not interested in wearing a costume? We depend on volunteers for help in sewing costumes, too.

Giving Opportunities

Every contribution makes a real difference at PWELC.

- ◆ Portable diesel generator, 3 to 5 kw, \$3000 to \$5000
- ◆ Table saw with safety attachments
- ◆ 2kw solar electric array for farm site \$10,000 (match)
- ◆ Diesel or flex-fuel pickup truck
- ◆ Small diesel car to run on bio-diesel
- ◆ 3-D archery targets (other than white-tailed deer)
- ◆ 1888-period-appropriate clothing and tools, especially garden tools, crafting items, or a plow.
- ◆ Contributions to the student scholarship fund



Upcoming Events at Prairie Woods

AN EVENING UNDER THE PRAIRIE STARS .. FRIDAY, SEPTEMBER 12, 5:30 PM

PRAIRIE WOODS FALL OPEN HOUSE SUNDAY, SEPTEMBER 21, 1 PM-5 PM

HALLOWEEN HAUNT SATURDAY, OCTOBER 25, 6 PM-9 PM

YES:MUSIC, ENERGY, & INSPIRATION MONDAY, NOVEMBER 10, 7 PM-9 PM

LOOKING FOR COMMUNITY PROGRAMS? SEE PAGES 8 AND 9.

PRAIRIE WOODS:

THE SAUDI ARABIA OF WIND & SOLAR

IN KANDIYOHI COUNTY

Well, a slight exaggeration perhaps. But June marked the first month that PWELC “exported” more power than we “imported!” Our 20 kilowatt Jacobs wind turbine and 2 kilowatt solar electric array produced enough power to satisfy our needs at Prairie Woods for the month of June, as well as send a small amount (300 kw) back onto the grid. By this fall, we hope to complete the installation of an additional 2 kw solar array. The added sun-power will boost our daytime power production during typical high-use times for offices and buildings.

The renewable energy installations at Prairie Woods have been made possible by Kandiyohi County, Great River



Energy, Kandiyohi Power Cooperative, the West Central Clean Energy Resource Team, and rebates from the Department of Commerce and Great River Energy. As energy prices continue to increase, the value of our wind and solar installations also continues to increase. The state of Minnesota offers rebates of \$2000 per kilowatt for solar electric systems, which is matched by \$2000 per kilowatt by Great River Energy. In addition to these rebates, homeowners and business owners can take advantage of tax incentives. Check out the solar rebate program at www.energy.mn.gov and plug into the sun yourself.



ENERGY INTO OUR FUTURE: GET INVOLVED!

Call Anne at Prairie Woods to learn more.

A unique and exciting program of PWELC and the Southwest Initiative Foundation, the Youth Energy Summit engages teams of youth to literally put energy into our future. Youth (grades 8-12) participate in four special events to learn about and discuss energy issues. Over the school year, teams undertake an energy action project of their own choosing, and an award ceremony culminates the season.

Teams are being accepted for the 2008-2009 season. Call us to be a part of YES!



WEBSITE UPGRADES IN THE WORKS



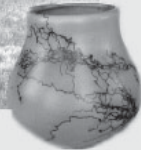
Thanks to a gift from the family of Gary Westby and the expertise of Jason Zook, improvements to the Prairie Woods website will soon be visible online. Check out www.prairiewoodselc.org for the latest from Prairie Woods.



NICE THINGS DONE FOR PRAIRIE WOODS. . .

by people like you

- ♦ We were honored to receive memorial funds from the family and friends of Jim Morris in support of youth sporting programs at Prairie Woods. Funds provided in Jim's memory were used to purchase durable spinning targets which will be enjoyed by literally thousands of youth at the Westby Educational Shooting Sports Range.
- ♦ Friends and family of Doug Grund contributed funds to help support program activities related to the Indian History Village. Doug had a lifelong interest in archaeology, as well as a love for kids and learning. Some of the funds received have been earmarked to help acquire pottery artifact replicas and materials to enable students to experience making pottery items from locally-harvested clay. Each set of small hands shaping pottery will be a tribute to the memory of Doug Grund and the thoughtfulness of his family.
- ♦ The Willmar Rotary Club contributed \$500 to help support youth programs at Prairie Woods.
- ♦ Once again, Bob and Shirley Caine have directed proceeds from their Annual Celebrate Life Golf Outing in Santa Rosa, California, to Prairie Woods Environmental Learning Center. Bob is a descendant of Swedish immigrants (the Johannes and Daniel Monson families) who homesteaded land that is now part of Prairie Woods Environmental Learning Center. Many thanks to our "Prairie Woods West Development Branch."
- ♦ Marc Reese, descendent of Peter Reese, contributed time and talent to do some needed repair work on the log cabin.



EAGLE SCOUT PROJECTS



Matthew Gilland labored away last winter removing cedar trees from our prairie reconstruction areas. Thanks, Joel Halbritter and board member Joel Schmidt, for helping to supervise Matthew's Eagle Scout project.



Tom Lapatka will be working on ski trail improvements at Prairie Woods as part of his quest for Eagle Scout. Tom, a member of the Willmar High School Nordic Ski Team, will help coordinate volunteer efforts to expand our trail system

with the goal of refining a 5k race loop to be used by the Nordic ski team.



Matthew Schmiedeker, Eagle Scout candidate from Troop 545 in Spicer, completed the installation of a 9-sign interpretive walk

(shown above) that includes prairie, wetland and woodland. Matthew's project was a component of a larger project funded by a Scenic By-Ways grant.

THE HISTORY OF CORN EXHIBIT

Bill Gabbert is completing artwork and signage for the History of Corn Exhibit developed by PWELC Trustee, Doug Mossberg. Be sure to check out the corn exhibit at our Fall Open House. Major supporters of the exhibit include: MN Corn Growers Association, Bushmills Ethanol, Central Lakes Cooperative, Land O'Lakes, Kandiyohi County Corn Growers, Stearns County Corn Growers and Meeker County Corn Growers.

Teachers, call about scholarships for your class to participate in the History of Corn Exhibit, and in

agriculture and the environment programs at Prairie Woods. Scholarship assistance has been provided by Stearns, Meeker and Kandiyohi County Corn Growers Association as well as the Willmar Area Ag Sales Group. Funds are available on a limited basis for classes to attend from their respective counties. Call soon to reserve.





INTERNS GAIN AND SHARE WISDOM IN SUMMER EXPERIENCES

My name is Haven Davis, and I'm from Grand Rapids. (Grand Rapids is also the hometown of Judy Garland, by the way. Attempts to rename it the Emerald City have failed, despite widespread popular support.) I just completed my sophomore year at Gustavus Adolphus College. I thought I wanted to major in music when I began college, so I have my Music minor, play the French horn in several musical groups and teach piano lessons on campus. I decided instead to double major in English and Environmental Studies. (When I graduate, I plan on writing song lyrics about trees.) In 2008-2009, I will serve as the co-president of our campus environmental group and I will work on recycling issues for my work-study. Although I am excited to go back and get involved on campus again, I will really miss working here. The people are wonderful, the land is beautiful, and I learn and grow so much every day.



Prairie Woods interns, summer 2008, included Krista Lundgren (left) and Haven Davis. Not pictured is Eric Dubbelde.

Hi! My name is Krista Lundgren. I am originally from Belgrade, and have worked out at PWELC in the past. I am currently on summer break from college. I will be a senior at NDSU where I will be graduating in the spring of 2009. I am majoring in Natural Resource Management and have a minor in Range Science. I am involved in Saddle and Sirloin club, and also The Wildlife Society of NDSU. As much as I want to get back to school and finish up, I am truly enjoying my internship out here at PWELC. I have met a lot of good, hard working people who have taught me a lot and also have taught me how to have a lot of fun while at work. I have truly learned a lot from my experience already at Prairie Woods.

Hi, I am Eric Dubbelde, an intern with the Minnesota DNR-MinnAqua Program. I cover the West Central portion of Minnesota teaching aquatic fishing programs. My office is based out of the Prairie Woods Environmental Learning Center. I come into the office about once a week to do paperwork, write letters and make phone calls. The rest of the time I am out in the field teaching programs, ranging from water quality, fishing techniques/history, invertebrates, and a strong focus on regulations/safety, to kids and adult groups. At the end of each program I take the kids and adults fishing for about an hour. This program strives to get kids involved with the outdoors and fishing, so that they can participate and pass on this great sport to younger generations. Some of the kids and adults who sign up for the programs, know nothing about fishing or have never fished before. There's nothing more satisfying to me than seeing a person who has never fished before learn something new or watch them light up when they catch their first fish. I am glad that I have had the opportunity to work with MinnAqua and pass on the great sport and knowledge of fishing to a younger generation.



WILLMAR AREA COMMUNITY FOUNDATION PROVIDES \$4000 GRANT

Funds provided by our long-time supporter Willmar Area Community Foundation are enabling improvements for challenge course and time travel equipment. Challenge course upgrades include an auto-belay device for the indoor climbing wall. Time Travel volunteers are sewing costumes in order to stretch dollars invested by Willmar Area Community Foundation. Past projects supported by WACF include the indoor climbing well, the yurt, Project Eco-Voyageur, wetland walkway and challenge course upgrades.





Challenge Course Update

If a picture is worth a thousand words...



... then
here are
a few
"words"...



... about
summer
on the
Challenge Course
at Prairie Woods.



JJM VICTORY RUN REPORT

Prairie Woods ELC and race director Deb Anderson hosted the fourth-annual JJM Victory Run on June 21, 2008. Results for the 5K are available at www.pickleevents.com (search for "Victory Run"). Plan to join this great trail-run next year:

registration forms for the 2009 Victory Run are on the events page at www.PrairieWoodsELC.org/events.html.



Citizen Science Opportunity

SONG BIRD MONITORING

by Joe Gartner

Have you ever wondered about the "secret lives" of birds? During the summer of 2009, PWELC will become part of an internationally acclaimed bird research project known as MAPS (Monitoring Avian Productivity and Survivorship). MAPS is a network of bird monitoring sites throughout the Western Hemisphere. The goal is to learn about the secret lives of songbirds through bird banding and point counts. This will allow PWELC to develop a breeding bird list of the site and determine population dynamics such as productivity, survivorship, and site fidelity. Ten large mist nets will be used to capture songbirds. Birds will be banded, measured and released. Seven mornings of bird banding will occur between May 31 and August 8. The goal is to recapture as many birds as possible that visit the station (about a twenty acre site). At the end of the bird banding season the data will be sent to the Institute of Bird Populations in California where it will be combined with all the other stations.



photo by Jim Williams

Interested in helping with this project? Contact PWELC. Volunteer activities include photography, recording data, taking birds out the nets (extracting), setting up/taking down nets, computer processing, greeting visitors, and more. Donations are also being sought to help acquire the necessary equipment and supplies. A summary of these needs, with their estimated cost, is available at the PWELC office.

Joe Gartner is the coordinator of the Prairie Woods Monitoring Station. He established and operated the Buffalo River Monitoring Station, near Glyndon, MN, from 2000-2004. Joe's phone number is 320-848-6239 (evenings).

TENTATIVE 2009 DATES

Training/Information Sessions: May 5 and May 19, 7-8 pm

Bird Banding Dates: Saturday, June 6; Tuesday, June 16; Saturday, June 27; Tuesday, July 7; Saturday, July 18; Tuesday, July 28; and Thursday, August 6.



Shooting Range Update

FOCUSING ON FOREVER

by Ryan Block

I recently attended a workshop at the Springbrook Conservation Education Center in Iowa. The 3-day event, hosted by Pheasants Forever (PF), was focused on getting young people outside and involved in the outdoors. PF has a "NO CHILD LEFT INDOORS" campaign that has targeted getting youth active outdoors through local PF chapters. There were over a hundred people at this national event, and it was exciting to see the enthusiasm.

I was fortunate to be enrolled in the "How to Teach Wing Shooting Skills to Kids." This session was limited to 15 participants and was a great hands-on learning experience. Ed Augustine and his son Mike led the session. We learned a great deal about the sport of shot gunning and how to safely and ethically present the sport to young people.

It was a six-hour drive, so the ride home provided plenty of time to reflect on the weekend. The thing that kept coming up in my mind was how blessed we are in this area for opportunities for youth in the outdoors. The title of the



weekend was "Focusing on Forever;" it is true that the number of young people spending time in the outdoors is declining, but local conservation groups like Minnesota Waterfowl Association, Pheasants Forever, Ducks Unlimited, Ikes and others are partnering with PrairieWoods

to provide opportunities for our youth. There is the PF Ring-neck Camp and a soon-to-be youth mentor hunt. The MWA puts on a habitat day, Prairie Pothole day, and a Woody Camp. DU has a Greenwing Camp, and all the local groups combine together to provide a free trap shoot at the Willmar Trap Club. And that is the short list. So, this fall, take advantage of some of the local opportunities for you and your kids.

**Special thanks to Kandiyohi Chapter Pheasants Forever for sending me to the Focusing on Forever Workshop.*

Time Travel Update

INSIGHTS FROM THE PAST

ADDRESS TODAY'S ENERGY ISSUES

by Teri Wermerskirchen

When Anders Danielson and his family arrived as homesteaders at the PWELC site in 1871, they must have been in awe of the richness around them. Fertile soil, plenty of water: it would have seemed the resources were endless. How could they even have fathomed the high energy demand and limited resources we face today?

Now that the energy issue is forefront, we realize it may take many different approaches to deal with it. One of those is to learn from our history. As one Ridgewater student said at an Intergenerational Dialogue event regarding energy, "the youth of today will look to the older generations for solutions." The Time Travel program is one more venue for learning at PWELC-one more way to help students gain insight.



Students who visit the log cabin learn about the close connection between pioneer, food and the earth, about a time of low waste and plenty of recycling and reusing. It's an opportunity for the students to compare and contrast the differences in technology and energy needs during different time periods.

Thanks to a generous grant from Willmar Area Community Foundation for more props and costumes, the program can now accommodate larger groups. Thank you, Willmar Area Community Foundation!

*Immersed in Learning,
Morning, Noon, and Night. . .*

ASK ABOUT MULTI-DAY, OVERNIGHT PROGRAMS
FOR GROUPS OF ALL SIZES.



COMMUNITY PROGRAMS

ADVANCE REGISTRATION REQUIRED: 354-5894

Kids' Events & Activities

Pirates of the Carabiner Grades 3 and up

Saturday, September 27, 9:00 am-12:00 pm

\$15/ person [\$13.50 Prairie Woods member cost]

Arrrr, Maties!! This is your chance to come to Prairie Woods to become a Pirate of the Carabiner. We will be sailing in the pirate ship, climbing the cargo net, walking the plank, and searching for (and hopefully finding) pirate treasure.

Squirrel Social Grades 1-6

Monday, September 29, 3:30-5:00 pm

\$10/student [\$9 Prairie Woods member cost]

We are going nuts at Prairie Woods so we need squirrels...Flying squirrels. Come join us at Prairie Woods and get your chance to try the ride that lets you swing through the treetops like flying squirrels. We will also learn something about teamwork, safety and trying our best. We will end the class with a "nutty" snack time for the squirrels!

Pioneer Girls Day Grades 2-6

Monday, October 6, 3:30-5:00pm

\$8/student [\$7 Prairie Woods member cost]

Just like Laura Ingalls, you can be a pioneer girl too. Dress in a bonnet and pinafore, do pioneer activities and even take home a doll you made yourself!

Great Annual Halloween Haunt Children of all ages

Saturday, October 25, 6:00 pm to 9:00 pm

\$8/child

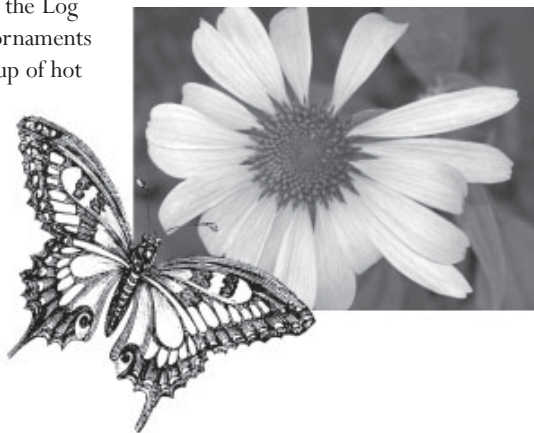
Talk with the creatures on the enchanted trail, carve a jack-o-lantern, and have a creepy critter painted on your face. Climb the Wall in costume. This Halloween party is most fun of the year! Children must be accompanied by an adult. *Appropriate for ages 4-12; all ages may attend.*

A Pioneer Christmas Grades 2-6

Children's Afternoon, November 17, 3:30 pm-5:30pm

\$8/student [\$7 Prairie Woods member cost]

Find out what the Christmas season was like during the time of the pioneers. Come cozy up to the wood stove in the Log Cabin and make ornaments and a toy over a cup of hot cocoa.



Clubs for Kids (4 sessions)

Youth Sporting Clays Ages 12 and up

Mondays, September 8, 15, 22, 29, 5:30 to 7:00? pm*

\$60/student

Great opportunity to improve your ability and learn new skills with NRA and 4-H certified instructors. Each session, we will shoot a round of sporting clays (25 targets). Register as a group or individually. We will provide shells, clay targets, shotguns and instruction at the Westby Shooting Range. (You may bring your own firearm.) Questions? Call Ryan at Prairie Woods. (*Program length depends on participant #s.)

After School Archery Club Ages 10 and up

Tuesdays: September 9, 16, 23 and 30, 3:45 to 5:30 pm

\$30/student [\$27 Prairie Woods member cost]

Learn the basics of shooting bow and arrow, using compound bows, Olympic target-style archery, and the basics of 3-D archery. Get tips on form, accuracy, technique and ranging distance. We will also play archery games. Equipment will be provided, or you may bring your own.

Autumn Adventure Club Grades 3-6

Thursdays: September 11, 18, 25, and October 2, 3:45 to 5:30 pm

\$30/student [\$27 Prairie Woods member cost]

It's great to get outdoors for exploration and adventure! You'll enjoy canoeing, rock climbing, geo-caching, new outdoor games, and other nature activities, led by Prairie Woods staff. Consider signing up with a friend or two and sharing rides. (Other ages interested? Please inquire.)

To the Top Club Grades 3-6

Tuesdays, September 16, 23, 30, and October 7, 3:30 pm-5:00 pm

\$25/ student [\$23 Prairie Woods member cost]

Join this four-week club and be among a group that can say they have made it "To the Top" of the various events here at Prairie Woods. We will do our best to make it to the top of the indoor climbing wall, the Flying Squirrel, the Giant's Ladder and the Outdoor Climbing Wall. It will be a fun and rewarding time during the after-school hours.

Pirates of the Carabiner Club Grades 3 and up

Mondays, October 6, 13, 20, 27, 3:30 pm-5:00 pm

\$25/student [\$23 Prairie Woods member cost]

Arrr, again! The same great fun as the one-day Pirates of the Carabiner (see above), but these activities are spread out into 4 weekly sessions.

Birding & Wildlife-Watching Club Grades 3-6

Thursdays: October 9, 16, 23, and 30, 3:45 to 5:00 pm

\$30/student [\$27 Prairie Woods member cost]

Autumn is the perfect time of year to see birds and wild mammals. Start your "life lists" now! Learn to identify wild creatures and read the signs they leave behind. Prairie Woods has binoculars, wildlife blinds, bird-feeding stations, and so much more to get you started. Consider signing up with a friend or two and sharing rides. (Other ages interested? Please inquire.)



The Story of Maja's Garden

Thanks to Deb (Danielson) Schmitzerle for this submission and for nurturing Maja's Garden. Read the rest of Maja's story at prairiewoodselc.org/newsletters.html.

Started in 2006 near the Prairie Woods barn, "Maja's Garden" has been designed to attract butterflies and birds. We invite you to stroll the pathway, rest beneath the shade of the large oak tree, watch hummingbirds and butterflies drink nectar from blossoms, robins splash in the birdbath and the deer graze the prairie. The gardens are planted and maintained by members of the Danielson family and friends of PWELC. Please call to get involved!

In August 1887, the prairie was hot and dry, but the Danielson family may have found relief in the shade of savannah oak trees. In the sixteen years since Maja homesteaded near Lake Florida with her husband Anders and three small children, Maja had borne four more children. Two had died in early childhood. Now, in 1887, Maja and Anders had marked twenty-five years of marriage on August 2. They still lived in the log cabin, but they did have the summer kitchen, so the cabin was spared the heat from cooking.

She had been having these headaches. They must have been painful and unrelenting – especially in the summer heat. It must have been difficult to be the mother her faith called her to be – heat, hard work and headaches – never ending. Four children still lived at home, – there was too much responsibility to put on them. And



little Andrew – he was only 4 ½ - who would teach him to read or learn the scriptures? She couldn't leave now! But she must. On August 17th, at the age of 45 years, Maja Danielson died.

We have no pictures of her. Did Andrew get her soft, oval eyes? Was she olive-skinned like Tilli? Was her face thin like Maria? An obituary was never printed because the New London paper was not printed that year. We have a weathered, moss-covered gravestone that stands erect under a cedar tree at the Lake Florida Mission Church – and now we have a garden – to remember this woman, and other like her, who had the courage to leave her home land, her family of origin to come here and endure the hardships common to those brave pioneers, so that we could enjoy the land and the life we often take for granted.

Thanks to Minnesota Green, Creative Gardens, Rupps River Country Gardens, Runnings, Concrete Products of New London and ASI Pond for donations.

MORE COMMUNITY PROGRAMS

ADVANCE REGISTRATION REQUIRED: 354-5894

Family, Adult, and All-Age Programs: for people of all ages.

Minnesota Birding Day FREE

Saturday, September 13, 7:00 am to 11:00 am

Join PWELC staff and volunteers as part of the Great Minnesota River Birding Day. We'll explore Prairie Woods' campus in search of as many bird species as we can find. Beginning and experienced birders of all ages welcome. Binoculars, field guides, and spotting scope available.

Green Power at Prairie Woods FREE

Monday, September 15, 4:30 to 6:00 pm

Prairie Woods is powered by wind, sunshine, wood and corn, with the goal to be renewable and energy self-sufficient by 2010. Visit the wind turbine, thermal solar panels, and photovoltaic solar panels. Learn about a biodiesel generator and three different corn-burning technologies, and discuss where we go from here.

Full Moon Canoeing 7 years to adult

Monday, September 15, 6:30 to 8:30 pm

\$6/person [\$5 Prairie Woods member cost]

A full moon will rise as the sun sets during this canoeing adventure on a peaceful pond. All equipment and introductory instruction provided. Children must be at least 7, and accompanied by an adult.

Fall Open House FREE

Sunday, September 21, 1:00 pm to 5:00 pm

PWELC's biggest event of the year, Fall Open House offers families a variety of activities for all ages. Come sample many of PWELC's exciting educational and recreational opportunities, plus enjoy special exhibits and displays.

Family Climb All ages!

Thursday, October 16, 6:00 pm to 8:00 pm

\$10/climber [\$9 Prairie Woods member cost]

For families of all ages to come and climb together and spend some quality time. (Adults not required to climb.) Parents, grandparents, kids, all welcome!

A Pioneer Christmas All ages!

Family Evening, December 1, 6:30 pm to 8:00 pm

\$20/family [\$18 Prairie Woods member cost]

Find out what the Christmas season was like during the time of the pioneers. Come cozy up to the wood stove in the Log Cabin and make ornaments and a toy over a cup of hot cocoa.



PRAIRIE WOODS
ENVIRONMENTAL LEARNING CENTER

12718 10th St. NE
Spicer MN 56288
1-320-354-5894

RETURN SERVICE REQUESTED

NONPROFIT ORGANIZATION
U.S. POSTAGE PAID
WILLMAR MN
PERMIT NO. 680

www.prairiewoodselc.org
pwelc@co.kandiyohi.mn.us



PRAIRIE WOODS *Warbler*

www.prairiewoodselc.org 320-354-5894
pwelc@co.kandiyohi.mn.us Spicer, Minnesota

10

WHY BE A MEMBER?

- ♦ Know you are supporting programs you believe in at an organization that is important to your community.
- ♦ Receive information and invitations to special events at Prairie Woods.
- ♦ Benefit from discounts on equipment rentals and programs.
- ♦ Continue to receive the *Warbler* newsletter three times a year.

*Thank you for
your support.*

Join Us!

PRAIRIE WOODS ENVIRONMENTAL LEARNING CENTER
Annual Membership for 2008

- ☐ New Member
☐ Renewing Member

SUPPORTER'S MEMBERSHIP

- ☐ Individual Membership \$25.00
☐ Family Membership \$40.00
☐ Organization/Business Membership Please call for rates.
☐ I / we are interested in volunteering at Prairie Woods.

BENEFACTOR'S MEMBERSHIP

- ☐ \$100 to \$499
☐ \$500 to \$999
☐ \$1000

Name(s) _____
Address _____
City/State/ZIP _____

Please enclose payment to Prairie Woods ELC, and send to:

Prairie Woods Environmental Learning Center
12718 10th Street NE
Spicer, Minnesota 56288

Questions or comments? Please call us at 320-354-5894 or e-mail us at pwelc@co.kandiyohi.mn.us